



# Gawler Country Music Club Inc

**Gawler Country Music Club**

South Australia's central location for live Country Music proudly presents your monthly newsletter.

**April 2015 - No: 263**

## DIXIE CHICKS

formed in 1989 as a Western

-themed bluegrass band. They soon became one of the most popular acts in country music, as well as the highest-selling female group in America. Beginning with 'Wide Open Spaces', the Dixie Chicks struck a balance between country-pop and the rootsy sound of neo-traditionalist country. They further distanced themselves from country's conservative boundaries as their career progressed. Nevertheless, the Dixie Chicks remained a compelling band live and on record, boasting three-part harmonies and an instrumental prowess that was virtually unparalleled among similar groups.

Sisters **Martie** and **Emily Erwin** were raised in Texas. Both girls showed talent at an early age, with Martie mastering the fiddle and Emily with the five-string banjo. The Erwins joined bassist **Laura Lynch** and guitarist **Robin Lynn Macy** to form the Dixie Chicks, whose name was modelled after the **Little Feat** song "Dixie Chicken." The group originally promoted a classic cowgirl image, with traditional country, folk, and bluegrass. As they progressed, the group's image and sound became more contemporary (aided by the steel guitar legend **Lloyd Maines**) which resulted in Macy's departure. With Lynch now on lead vocals, the remaining trio resurfaced in 1993, but Lynch left the group shortly thereafter. Both she and Macy were victims of the Erwins' desire to foster a more youthful image. Lynch's replacement was **Natalie Maines**, Lloyd Maines' able-voiced daughter.



**'...a compelling band live and on record, boasting three-part harmonies and an instrumental prowess that was virtually unparalleled among similar groups.'**

The new lineup brought a new wardrobe, a modernised country sound, and the massive success of the 'Wide Open Spaces' album - which went quadruple platinum within its first year and eventually became the best-selling group album in country music history. 'Fly' followed in 1999, returning the Dixie Chicks to the top of the country charts with the singles "Ready to Run", "Goodbye Earl", and "Sin Wagon". Although the lyrics owed a good deal to black comedy, it proved that the Dixie Chicks didn't always adhere to the conservative ideals of their country fan base.

The Dixie Chicks were now genuine superstars. They joined **Shakira**, **Mary J. Blige**, **Cher**, and **Celine Dion** for the filming of VH1's *Divas Show* in 2002. They were back with the polished sound



of the girls' recent nostalgic, bluegrass-based style. 'Home' gave them their first two Top Ten hits on the pop charts with "Long Time Gone" and "Landslide". 'Top of the World Tour: Live' and its accompanying DVD arrived in 2003, capturing the band's strength as a live act where Natalie Maines spoke out against the Iraq War. Many American fans lashed out in response, and country radio boycotted the album. In 2006, 'Taking the Long Way' dealt with that backlash with songs like "Not Ready to Make Nice," which won three Grammy Awards and re-established the group as a commercial force. The album itself netted an additional two Grammys, and "Not Ready to Make Nice" earned the Dixie Chicks their highest peak to date on the pop charts. In March 2010, the Dixie Chicks announced a string of summer concerts alongside **the Eagles** and **Keith Urban**. The Dixie Chicks recorded an intimate live set as part of VH1's *Storytellers*, further illustrating the trio's strength as a live act.

**CREDIT:** Andrew Leahey and Steve Leggett

### Inside this issue

This Months Birthdays .....	2
Winners And Grinners.....	2
This Months Events.....	3
Did you know Bill Mumy?.....	4
Country Music Word Search .....	5
Country Music Today .....	6
March GCMC Show .....	7
Gig Guide.....	8
Australias Top 20 Country Tracks .....	9
Music Workshop & Open Mic .....	9
Dad, Dave, And Mabel and more!.....	10
Coming Events.....	11
Membership Form .....	12
Committee Information .....	12

### Must see

- **S.A. CM Festival and Awards**  
Check out page 11 for more info...
- **Time to take the brain for a spin**  
Try the Word Search on page 5.
- Thanks to your ideas and reader submissions, we have tons of fun and giggles this month and some new goodies just for you. Keep 'em coming...

## Disclaimer

The club newsletter is a monthly publication designed to keep members informed on the activities of the club and other functions. Opinions and views expressed in the newsletter are not necessarily those of the publishers.

## A Word From The Editor...

Hi folks. I was wondering what to write about this month when someone I was chatting with at the last show was dancing a having a great time and said "I love these rocky songs. It's about time we had some modern stuff like Alan Jackson, Keith Urban, and Shania Twain." How ironic it is to think that songs that are 30 years old or more can be called 'Modern Country'. So this months newsletter will hopefully shine some light on todays artists and songs.

Thanks to all who attended the last workshop. We made a few changes to hopefully get some excitement, inspiration, and activity going. And boy, did it. It was great to see many of you having those 'Aha!!' moments as things fell in to place. Well done gang.

Keep it up.

Peace to all.

*Stewart Ray*



## Presidents Report

G'Day Members & Friends.

We are still hearing rumors from people outside of our club about us moving.

This time we are supposed to be moving back to Gawler. As I have said before, **If you don't hear it from your committee - or its not in our newsletter it's not True.**

Well, onto our show. What a fantastic day we had with **Midnight Special**. Warren Johncock does not stop. If he's not on stage, he is out asking trivia questions and giving away little prizes. He never stops for a break. Well done guys. We all had a great day. We also had a great guest artist in **Tania Cornish**. What a talented young lady she is. Keep up the good work Tania. Well, onto our April show. We will have **Murray Mac & True Grit with Norma O'Hara Murphy**. This will be another great day, so don't miss out on a seat for this show.

So until then...

Keep It Country

Regards,

**Keith Warren**

President/Entertainment Officer



## Birthdays

Kay Dobie - 2nd  
Roger Howard - 8th  
Roslyn Edmunds - 9th  
Josie Evans - 9th  
Maddie Lycetl - 11th  
Robert Chapman - 12th  
Gloria Jolly - 15th  
Eileen Jones - 16th  
Patrician Christian - 17th  
Tania Mattner - 17th  
Robert Kennedy - 17th  
Pat Harris - 17th  
Carlene Oliver - 18th  
Alice Grant - 19th  
Louise Vardon - 21st  
Lyn Gilbert - 22nd  
Fay Scown - 23rd  
Peter Tomlinson - 24th  
Joyce Ions - 25th



## Winners

### Raffle

Shirley Shorre  
Roz Lang  
Lizzie  
R. Thompson  
G. Bischoff  
Keith Warren  
Pam Burke  
Maxine Bugg  
H. Dayers  
Barton Jones  
Margaret Kennedy

### Door Prize

Fay Scone

### Lucky Envelopes

Cherle Watson  
Barb Mclellan  
Liz Henderson  
Lee Martin

### Monte Carlo

Kathy Trankalis &  
Earlston Gniel

### Members Draw

(KFC Voucher)  
Judy Elbourne



**Monte Carlo Winners**

Kathy Trankalis & Earlston Gniel





## April Events

# GAWLER COUNTRY MUSIC CLUB INC.



## Murry Mac & True Grit



with special guest  
**Norma O'Hara Murphy**

**Sunday April 19th 12 - 4 pm**

**Gawler Country Music Club**

The Grenville Centre. 10 Playford Boulevard. Elizabeth  
(Across from the Civic Centre)

***A show not to be missed !!***

Entry Fee: Members - \$6.00, Non Members - \$8.00

Tea and coffee - \$1.00 Food and drinks available

Contact Keith Warren for enquiries: 8255 8920

Thanks to KFC for your Sponsorship 'We like it like that!'

**THE GREAT  
AUSTRALIAN  
TAILGATE PARTY**

**SUNDAY \* 12TH APRIL  
HAHNDORF OLD MILL \* CARPARK  
2-8PM \* TICKETS \$49.90**

**ADAM BRAND**

**\* WOLFE BROTHERS \*  
JASMINE RAE \* MATT CORNELL  
\* GARY DANIEL \***



The best of  
Australian Country  
music LIVE  
at the Hahndorf  
Old Mill!

Ph: 8388 7888

[admin@hahndorfoldmill.com](mailto:admin@hahndorfoldmill.com)



# Due Now

Yes folks. It's that time of year again when your **Gawler Country Music Club** membership fees are now due. All you need to do is fill out the renewal form at the top of page 12 from any recent newsletter and send it in to the postal address on the form with your payment (or bring them with you to the next show). It is really important that you fill in ALL of your current details (address, D.O.B etc.) to make sure that our records are up to date. Thanks...

## Did you know?

Lost in space star **Bill Mummy** (who played young **Will Robinson**) was reportedly the first choice to portray **Eddie Munster** in the 1964 CBS

situation comedy **The Munsters**, but his parents objected because of the extensive makeup requirements. Bill Mummy is actually an accomplished song writer and musician who plays guitar, bass, keyboards, banjo, mandolin, harmonica and percussion. He had an Emmy nomination for original music in the 1991 movie *Adventures in Wonderland*. Among his various musical credits, he has written and recorded songs with **America**, toured with **Shaun Cassidy**, and played in **Rick Springfield's** band in the film *Hard to Hold*.



Miguel Ferrer

Mummy performed in the band 'The Jenerators' with fellow actor **Miguel Ferrer** - who was best known for his role as the FBI agent Albert in the mini series 'Twin Peaks', and as Owen Granger in the TV series **NCIS: Los Angeles**. Ferrer is also a good friend of **Sterling 'Biff' Ball** - Director of the renowned **Ernie Ball/Musicman** company. Musicman guitars are the preferred choice for elite guitarists like **Steve Morse**, **Keith Richards**, **John Petrucci**, **Steve Lukather**, **Joe Bonamassa**, **John Fogerty**, and world class country guitarists **Brad Paisley**, **Johnny Hiland**, and **Albert Lee**. Many of these artists have their own signature model. **Albert Lee** is well known for his work with the Everley brothers, Emmy Lou Harris, Eric Clapton, Carlene Carter (Johnny Cashes daughter).



Sterling Ball



Brad Paisley



Johnny Hiland



Albert Lee

# COUNTRY MUSIC STARS WORD SEARCH PUZZLE



- |                  |               |                 |              |
|------------------|---------------|-----------------|--------------|
| ALAN JACKSON     | FAITH HILL    | LITTLE BIG TOWN | SUGARLAND    |
| BLAKE SHELTON    | GARTH BROOKS  | MARTINA MCBRIDE | TAYLOR SWIFT |
| BRAD PAISLEY     | GEORGE STRAIT | MIRANDA LAMBERT | TIM MCGRAW   |
| CARRIE UNDERWOOD | KEITH URBAN   | RASCAL FLATTS   | TOBY KEITH   |
| CLINT BLACK      | KENNY CHESNEY | REBA MCENTIRE   | TRACE ADKINS |

**THINK YOU  
YOU CAN'T  
BE FOOLED?**

You just were. Read it again.

*Did you hear  
about the bass  
player who was  
so depressed  
about his bad  
timing that he  
threw himself  
behind a train?*

**TEENAGERS:**

Tired of being harassed  
by you stupid parents?

**ACT NOW !!!!**

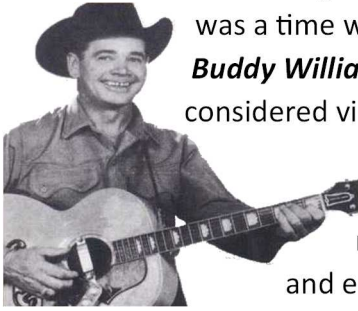
Move out, Get a Job,  
and pay your own  
bills while you still  
know everything.



So, just what is **'Country Music' today?** I know this topic will open up a can of worms for some people, but we'll keep it simple and address the most common debates that we hear from Country Music fans.

### "It's too modern..." or "...too rocky".

That's an easy one. Let's put everything in perspective. All new music (or any art form for that matter) starts out as contemporary/progressive; and as time marches on and it evolves to become **Modern**, then **'Regular'**, to **Classic**, **Vintage**, **Old Time**. You get the idea. There was a time when **Charlie Prides** "Kiss an angel good mornin'" (1971), or **Buddy Williams'** "Rocking Cowboy" (1962) was modern, but is now considered vintage or classic country. After half a century or more, that's no surprise. It's simple. We just need to accept that everything changes, and move with the times. It does not mean we need to embrace the changes – just accept them and enjoy what we can. Artists like **Keith Urban**, **Jasmine Rae**, and the **Zac Brown Band** will be categorised as 'vintage' or 'classic' soon enough.



### "It's too Americanised..." or "...not Aussie enough"

It seems some people have a bee in their bonnet about this. Musicians get their influences from all genres and artists that they listen too. Today's Aussie country legends got their inspiration from **Buddy**, **Smokey**, and **Slim**. But they also love **Johnny Cash**, **Waylon**, **Willie**, and **Merle**. Recently, **Troy Cas-sar-Daley** and **Adam Harvey** withdrew their nominations from January's country music awards in Tamworth after **John Wil-liamson** said their album **'The Great Country** on the ARIA album chart and has sold too American to be considered for an founder of the **CMAA**) also had ob-success of **Keith Urban**, who was in of the year, being recognised as an Australian artist. Don't get me wrong. I love John's music. His songwriting captures the Aussie spirit to a tee, and he has the 'Aussie Balladeer' sound down pat. But his appreciation for all things country music is narrow minded. If Country Music in Australia had been 'Americanised' to the degree that some would have us believe, then we would have a 'ghetto gansta' accent singing songs about "Gittin' down an jiggy wit ma booty thang - ya dig it Homey". Just insert a [DOOF DOOF] sound in the beat and you get the picture.



I had the pleasure of seeing a show many years ago with **Slim Dusty** and a very young (and trendy looking)



**Keith Urban**. It was an awesome show watching the two legends together on stage. They put on one hell of a show. I remember well a phrase that Slim said when someone asked him what he thought about the 'New, rockier sound' like the style Keith and others were playing at the time. Slim's response was **'Country music comes from what you sing about, not how you play it.'** And Slim is dead right. There is an old joke that I am reminded of; 'What do you get if you play a country record backwards?'. The answer is 'You get back your car, your house, your wife, your job, your dog...'. Funny, but true. To those of us who have spent most of our lives listening to and/or

playing country music, we understand that the roots of country music comes from singing about hard times. Hard times in love, hard times in life. Working on the land; working hard for the ones you love; Getting tough when the going gets rough; and about those special times with your friends and family. 'Work hard, play hard' – right? The sound may have evolved, but the roots haven't changed. Country music is singing about what matters most to you. The bottom line folks is that everyone has music tastes and preferences and is entitled to them. Most of them ingrained in you from the good feelings that Country Music gave you over the years, especially during the hard times. Nobody can take that away from you. Just like nobody can tell todays generation that todays country music is not country or take that away.

Long live Country Music !!!

*Stewart Ray*



## GCMC Show - March 15th

**Midnight Special** supplied the entertainment at our March show, with **Tania Cornish** as the guest artist. And entertain they did. There was a great selection of tunes ranging from golden oldies to some more modern tunes. You could certainly tell folks enjoyed it with the dance floor kept busy the whole time. And it wasn't just the stage where the fun stopped. Warren and the boys had the crowd involved on the dance floor and around the room. It just goes to show you that entertainment does not just mean playing songs. Great job guys. I didn't get to see Tania perform this time, but all reports said that she was excellent too.



*Stewart Ray*



Photo Credits: Rob Chapman

Check out our website for full colour photos of the shows. If you have any feedback from our shows or other events, please feel free to contact us at our P.O. Address or contact the newsletter editor (Stewart Ray).



[www.facebook.com/pages/Gawler-Country-Music-Club/267502980093560](https://www.facebook.com/pages/Gawler-Country-Music-Club/267502980093560)



Saturday 4<sup>th</sup>  
12 - 4.30 pm

# April 2015 Gig Guide

	<p><b>Gawler CM Club Workshop</b> Bring your instruments along to play and learn. Great Music... Great Fun !!! Entry: \$4.00 per person for all attending. Tea and coffee are provided. BYO Nibbles to share. Anglican Parish Hall. 26 Cowan Street, Gawler <b>NOTE:</b> The Gawler Country Music Workshop and Open Mike will automatically be cancelled when the forecast temperature is 32 degrees and over.</p>	Fred Payne: 8255 9248 or 0417 851 609
Sunday 5 <sup>th</sup> 12:30 - 4.30 pm	<p><b>Norma O'Hara Murphy</b> backed by <b>Bernie And The Bandits</b> Adelaide CM Club Inc. - Slovenian Club, 11 LaSalle St. Dudley Park</p>	8365 6315
Sunday 5 <sup>th</sup> 12 - 5 pm	<b>Eddie Edwards and Friends</b> plus <b>Billy Dee</b> - Willaston CM Club - Willaston Clubrooms, Gawler River Rd.	0403 008 537
Sunday 5 <sup>th</sup> 2 pm	<b>Windstar Band</b> - SECMA Club Day, R.S.L Bowling Club Room, Jubilee Highway. East, Mount Gambier	Ros: 8725 5762
Sunday 5 <sup>th</sup> 4 - 8 pm	<b>Mike Festa's Country Classics</b> - Stanley Bridge Hotel, 14 Onkaparinga Valley Road, Verdun	8388 7249
Monday 6 <sup>th</sup> 8 - 9 pm	<b>Hillbilly Hoot</b> - Linde Reserve. Nelson St, Stepney	
Friday 10 <sup>th</sup> 2 - 3 pm	<p><b>Billy Dee</b> Hallett Cove Lutheran Church. Ragamuffin Dve, Hallett Cove</p>	0457 236 340 or 8387 0352
Friday 10 <sup>th</sup> 7:30 - 10 pm	<p><b>Dave Verrall</b> Hindmarsh Valley Hall</p>	8555 3219 or Dave: 0400 719 112
<p><b>Saturday 11<sup>th</sup></b> <b>11 am - 4.30 pm</b></p>	<p><b>Gawler CM Club Open Mike</b> - Everyone is welcome !! We look forward to seeing you on the 2<sup>nd</sup> and 4<sup>th</sup> Saturday of each month. Entry: \$4.00 per person for all attending. Tea and coffee are provided. BYO Nibbles to share. Anglican Parish Hall. 26 Cowan Street, Gawler <b>NOTE:</b> The Gawler Country Music Workshop and Open Mike will automatically be cancelled when the forecast temperature is 32 degrees and over.</p>	Fred Payne: 8255 9248 or 0417 851 609
<p>Saturday 11<sup>th</sup> 1st show - 2.30pm 2nd show - 7.30pm</p>	<p><b>The Sherrahs</b> and guests - New Album Launch Cowandilla Social &amp; Sports Club - 2A Ellen St, Richmond</p>	RSVP for free ticket
Sunday 12 <sup>th</sup> 1 - 5 pm	<p><b>The Blackhats</b> plus <b>Joe Musico</b> Southern CM Club, Lockleys Bowling Club. 46 Rutland Ave, Lockleys</p>	0408 891 512 or 8358 0014
Sunday 12 <sup>th</sup> 11 am - 4 pm	<p><b>Allan Webster and Country Gentlemen Band</b> Barossa CM Club. Stockwell Sports Club</p>	0408 763 326
Sunday 12 <sup>th</sup> 1:30 - 4:30 pm	<b>Norma O'Hara Murphy</b> with <b>Anthony Stuart</b> - NCMA Clubrooms, 28 Afford Rd, Port Pirie	8633 2302
Sunday 12 <sup>th</sup> 2 - 8 pm	<p><b>Adam Brand, Wolfe Brothers, Jasmine Rae, Matt Cornell and Gary Daniel</b> The Hahndorf Old Mill, Carpark, 98 Main Street, Hahndorf - BYO Camp Chair</p>	8388 7888
Monday 13 <sup>th</sup> 8 - 9 pm	<b>Hillbilly Hoot</b> - Linde Reserve. Nelson St, Stepney	
Friday 17 <sup>th</sup> - Sunday 19 <sup>th</sup>	<p><b>Heartland/Step'n' Back, Amber Joy Poulton, The Hoffmans, Bill Bedford, Leah Briggs, Bill Gray, Shirl Brown and Rod Toovey</b> - Yakka Park Music Festival, Lucindale (in the iconic "Elad Shed")</p>	8766 7001 or 0431 901 158
Saturday 18 <sup>th</sup> 8 pm until late	<p><b>The Blackhats</b> Gallipoli Centenary Cabaret 60/40 music - Taillem Bend Town Hall \$20p.p. 12-18yr \$10 - BYO Supper/Nibbles. NO BYO Alcohol</p>	Tickets from Taillem Bend RSL members
Sunday 19 <sup>th</sup> 1 - 5 pm	<b>Midnight Special</b> - Railroad CM Club. S.A. Sea Rescue Squadron. Barcoo Road, West Beach	0413 522 516
<p><b>Sunday 19<sup>th</sup></b> 12 - 4 pm</p>	<p><b>Murray Mac &amp; True Grit plus Norma O'Hara Murphy</b> Gawler Country Music Club The Grenville Centre. 10 Playford Boulevard, Elizabeth (Across from the Civic Centre)</p>	8255 8920
Sunday 19 <sup>th</sup> 1:30 - 4:30 pm	<b>Cross Country</b> - NCMA Clubrooms, Afford Rd, Port Pirie	8633 2302
Monday 20 <sup>th</sup> 8 - 9 pm	<b>Hillbilly Hoot</b> - Linde Reserve. Nelson St, Stepney	
Wednesday 22 <sup>nd</sup>	<b>Norma O'Hara Murphy</b> - Murrayville Senior Cits Hall	0412 668 208
<p><b>Saturday 25<sup>th</sup></b> <b>11 am - 4.30 pm</b></p>	<p><b>Gawler CM Club Open Mike</b> - Everyone is welcome !! We look forward to seeing you on the 2<sup>nd</sup> and 4<sup>th</sup> Saturday of each month. Entry: \$4.00 per person for all attending. Tea and coffee are provided. BYO Nibbles to share. Anglican Parish Hall. 26 Cowan Street, Gawler <b>NOTE:</b> The Gawler Country Music Workshop and Open Mike will automatically be cancelled when the forecast temperature is 32 degrees and over.</p>	Fred Payne: 8255 9248 or 0417 851 609
Sunday 26 <sup>th</sup> 11 am - 4 pm	<b>Good Company</b> - Murray Bridge CM Club - Imperial Football Club. Johnstone Pk, Murray Bridge	0409 697 747
Sunday 26 <sup>th</sup> 1 - 5 pm	<b>Hoffmans</b> - Kilburn R.S.L. CM Functions, Way Street, Kilburn	8449 4743
Sunday 26 <sup>th</sup> 2 pm	<b>Norma O'Hara Murphy</b> with <b>Anthony Stewart</b> - Edenhope Golf Club	0427 228 659
Monday 27 <sup>th</sup> 8 - 9 pm	<b>Hillbilly Hoot</b> - Linde Reserve. Nelson St, Stepney	

A special thank you to **Ian Fisk** for keeping us up to date with what's happening around the traps.

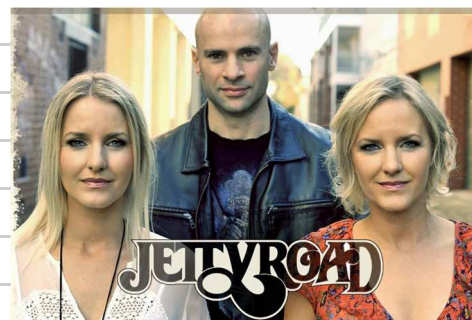
Phone: (08) 8296 3350 or visit here

<http://countrymusicsa.com.au/gigguide/gigguide.htm> for updates.





POS	Track Title	Artist
1	WHAT WE DID LAST NIGHT	Jetty Road
2	TAKE A WALK IN MY COUNTRY	Troy Cassar-Daley
3	YOU STILL TURN ME ON	Sandra Humphries
4	CURVES	Travis Collins
5	HAPPY	Lyn Bowtell
6	RAISE 'EM UP	Keith Urban & Eric Church
7	NO PHONE, NO MAIL, NO INTERNET	Aly Cook
8	SPIRIT OF THE ANZACS	Lee Kernaghan
9	WISH YOU HOME	Georgia Fall
10	I WILL LOVE YOU	Amber Lawrence
11	SOMEWHERE BETTER TO BE	Doug Bruce
12	LOVE ME TONIGHT	Christie Lamb
13	KNOCK KNOCK	Victoria Avenue
14	YES (A LOVE THAT LASTS)	Natalie Howard
15	LIE WITH ME	Lady Antebellum
16	SUPERHERO	Amber Lawrence
17	ROGER THAT	Steve Cheers
18	CRUSHIN' IT	Brad Paisley
19	LET'S GET OUT OF HERE	Roo Arcus
20	FOREVER BEGINS TONIGHT	The McClymonts



**GCMC Music Workshop**

Bring your instruments and learn from the experience of others.  
Have fun playing along with new friends.  
Come along if you want to sing or play...

- ♫ Guitar/Bass
- ♫ Keyboards
- ♫ Mandolin
- ♫ Drums/Percussion
- ♫ Banjo
- ♫ Ukulele
- ♫ Whatever you fancy...

**Only \$4.00 entry**  
Tea and Coffee available  
BYO Nibbles

First Saturday of each month  
12 noon to 4.30 pm  
Anglican Parish Hall 26 Cowan Street Gawler  
For further information contact Fred: 0417 851 609

**GCMC Open Mic**

*Everyone is welcome to come along.  
Entertain or be entertained.  
It doesn't get better than that !!*

Only \$4.00 entry  
Tea and Coffee available  
BYO Nibbles

2nd and 4th Saturday of each month  
11 am to 4.30 pm

Anglican Parish Hall 26 Cowan Street Gawler  
For further information contact Fred: 0417 851 609



*Holding on to anger is like grasping a hot coal with the intent of throwing it at someone else; you are the one who gets burned.*



## Dad, Dave, & Mabel

Dave and Mabel open a bed and breakfast. The conditions are pretty rough and ready but they eventually get a couple from the city to stay the night. When the couple arrives they complain that there is no toilet. Dave reassures them that this is just the way things are in the bush and provides them with a bucket if they need to relieve themselves during the night. The next morning Dave knocks on the door of the shack and asks what the couple would like for breakfast. They order a full bush breakfast and coffee. Dave whisks off but is back in a minute asking if they would like milk in their coffee. 'Yes, please, chorus the couple. 'Alright', says Dave, 'but you're gonna have to give us the bucket back so's the missus can milk the cow.

A verse from **'Whose Next?'** - By Max Crispin

I'm ushered in, and told to sit.  
 You'd think they'd smile a bit.  
 The tools of torture are in place,  
 and the terror shows on my face.  
 He greets me with an evil grin.  
 There's no escape, they've strapped me in.  
 His partner watching guards the door  
 while he clamps his hand around my jaw.  
 He asks me "What I did that day?".  
 I wish I had the nerve to say  
 "I can't reply, you silly goat."  
 Your hand is halfway down my throat."  
 At last the words I've longed to hear  
 as my dentist glumly says "You're clear."  
 He's probably quite a friendly guy.  
 But, boy it's great to say to him "Goodbye".



Bob, a 70 year old extremely wealthy widower shows up at the Country Club with a very sexy 25 year old woman who knocks everyone's socks off with her youthful sex appeal and charm. She hangs over Bob's arm and listens intently to every word. His mates at the club are all amazed. At the very first chance, they corner him and ask "Bob, how'd you get the trophy girlfriend?" Bob replies "She's my wife!" They are knocked over, but continue to ask. "So, how'd you persuade her to marry you?" "I lied about my age." Bob replies. "What?. Did you tell her you were only 50?" they asked. Bob smiles and says "No. I told her I was 90."

**--- A recent study has found that women who carry a little extra weight live longer than men who mention it. ---**

Ladies, If a man says he will fix it, he will. There is no need to remind him every 6 months about it.



'My doctor told me to avoid any stress. So I didn't open his bill.'

**I've just opened a new restaurant called 'Karma'. There's no menu. We just give you what you deserve.**



"I don't know why God kills drum sets, buddy. I just know it was God."

## Coming Events



With  
special guest  
**Hollie May O'Neil**



**Sunday May 17th 12 - 4 pm**

**Gawler Country Music Club**

The Grenville Centre. 10 Playford Boulevard. Elizabeth  
(Across from the Civic Centre)

Entry Fee: Members - \$6.00, Non Members - \$8.00

Tea and coffee - \$1.00 Food and drinks available

Contact Keith Warren for enquiries: 8255 8920

**2015 South Australian Country Music Festival & Awards**  
29th May - 8th June 2015



*Held annually  
in the Riverland*

### The **South Australian Country Music Festival & Awards**

is centred in and around **Barmera**, in the **S.A. Riverland**.

Participating towns are **Barmera - Berri - Cobdogla - Overland Corner - Loxton**.  
**Barmera** is situated 200 kms north east of Adelaide, and 200 kms from Mildura.

**Barmera Visitor Information Centre: Ph. (08) 8588 2289**

**South Australian Country Music Festival & Awards**

**Phone: (08) 8588 1030 or (08) 8341 0979**

Mail: PO Box 623, BARMERA, SA, 5345  
©2011 Riverland Country Music Club Inc





# Pass this on to your friends Membership Application and Renewal Form

Gawler Country Music Club Inc P.O. Box 285 Elizabeth SA 5112 Ph: (08) 8255 8920

Name: (Please Print)

DOB (Day and month only):

Address:  
(Or change of Address)

Suburb/Town:

Post Code:

Tel:

Mobile:

Annual Membership Fee: \$10.00

Are you already a Member?

Yes my Number is

No.....

My Favourite Country Music Artists are:.....

Do you sing or play a musical instrument?.....

I agree to abide by the constitution and rules of the club: Signature.....Date.....



**Please Recycle**

Please send this form with your cheque or P.O. (Not Cash) to The Secretary at the above address

**PRINT  
POST  
100007194**

**POSTAGE  
PAID  
AUSTRALIA**

*Dance Listen Eat 'n' Sip*



**Come along and Enjoy**

## Gawler Country Music Club Inc P.O. Box 285 Elizabeth SA 5112 (Outside)

Gawler Country Music Club Inc. is a non profit organisation dedicated to the development of all styles of Country Music. The activities of the club include regular monthly meetings and shows; providing opportunity and encouragement to amateur artists; producing this newsletter and showing support for all other South Australian Country Music Clubs.

### Committee Members

*Kevin Vardon, Allen Prow,*

*Veronica Antoniazzi, Helen Payne.*

*Les Parris.*

**ANNUAL MEMBERSHIP \$10.00.**

President/Entertainments Officer Keith Warren 8255 8920

Vice President George Dobie 8255 5789

Secretary Helen Warren 8255 8920

Treasurer Louise Vardon 8254 3440

Public Relations Officer Fred Payne 0417 851 609

Newsletter/Web Editor *Stewart Ray* 8254 3457

**ADVERTISING SPACE** is available in this Newsletter.

Costs are: Half A4 Page \$20.00.

Quarter A4 Page \$10.00.

Eighth A4 Page \$5.00 (Business Card Size)

**NEWSLETTER DEADLINE** To ensure entry in the next issue please send articles, advertisements etc. to **The Editor,**  
**Gawler Country Music Club Inc**  
**P O Box 285 Elizabeth SA 5112** to reach us by the **Second Sunday of the month.** Additional copies of the Newsletter may be obtained at club functions or by contacting the

**Secretary on 8255 8920.**

**Website:**

**[www.gawlercountrymusicclub.com.au](http://www.gawlercountrymusicclub.com.au)**

**RENEWALS DUE ON APRIL 1<sup>ST</sup>**